

## 9 CASTLEGATE STREET

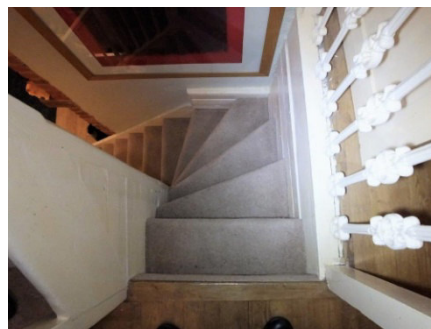
List entry no. 1187876

Grid Reference. TM 26016 32801

No. 9 is the NE end property of a mid 18<sup>th</sup> century terrace of five houses aligned NE-SW. (They are numbered 9, 10, 11, 11A, 12) They are built in red brick in Flemish bond with some of the bricks having diagonal pressure marks, usually found on pre 1800 bricks. Windows are of vertical sliding sash style with small panes. Entrance doors are of six panel design with blank brick infill beneath a brick arch.



At ground floor level no. 9 has the remnants of a variable height random rubble flank (NE) wall. A pine axial beam has cock beads to the lower corners with common joists covered by a plaster ceiling. A brick stack is positioned on the SE rear wall with adjacent cupboard to the NE corner. This has a two panel door with L hinges and to the SW of the stack is a winder stair with cast iron balustrade.



The first floor bedroom is of similar plan with pine axial beam with cock beads to the bottom corners. A vertical mortise was noted in the pine wall plate but original purpose is unknown.

Winder stairs carry on to the attic lit by a dormer with casement window.





The original form of the pine roof has been altered to allow access to a later rear extension. This has left exposed the empty square mortises in the top of the rear wall plate where the common rafters would have been set. Diamond set ridge with collared rafters to house the purlins.

## DISCUSSION

This is a terrace of small units but with good quality detailing and as such it would be interesting to be able to find more information about the original developer, builder and if there was a specific reason for their erection.

Elphin & Brenda Watkin. Jan/April 2020-05-01



Castle Gate Street towards King's Quay Street and the frontage of No.9 with all others being similar.



9-12 Castle Gate Street, Harwich  
(only No 9 visited)

