

39 WEST STREET

List Entry Number: 1280657

Grid Reference: TM 25920 32637

A timber-framed building with rendered brick façade and having two storeys with attics aligned NW-SE on the SW side of West Street. Building of two main phases which now contains frontage bay and long rear range, The frontage range contains an impressive pedimented door case against the SE wall and vertical sliding sash windows.

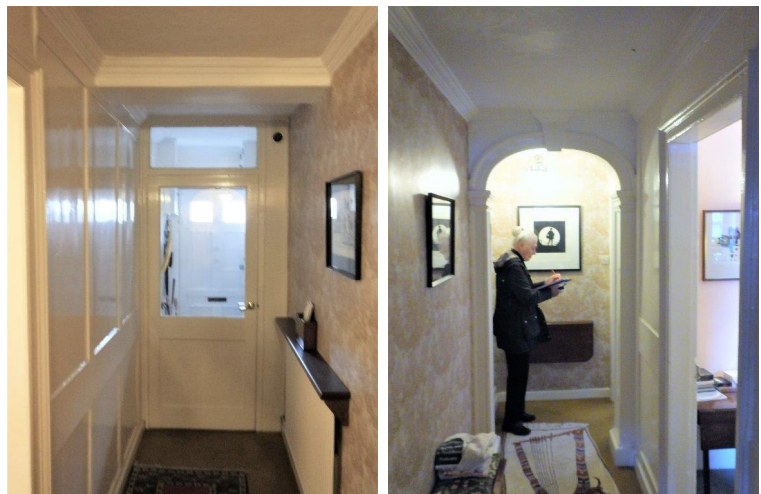


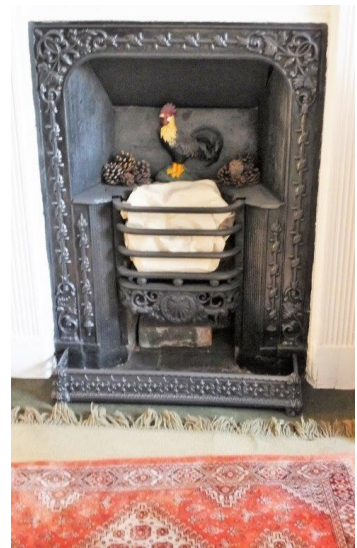
Phase I

The timber-frame has now been covered with the exception of a jowled storey post mentioned in the list description. However the roof is of typical 17th century framed, joggled side purlin form with paired principal rafters and the common rafters mortised into the purlins.

Phase II

The frontage bay has been divided with a partition of large panelling to provide an entrance hall along the SE flank wall with rear arched opening with central keystone and panelled pilasters. A two panel door with L hinges gives access into the parlour with cast iron grate in timber surround. A fine corner cupboard with semi-domed head, semi-circular shelving and later enclosing doors occupies the NW corner. The list description mentions that the wall behind the cupboard is of brick and curved to accommodate the cupboard. The axial beam to the hall and parlour had been boxed in and said to continue in no. 38 West Street.





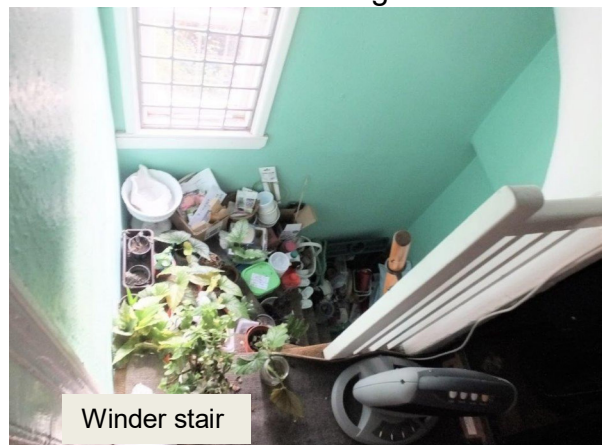
A straight flight of stairs to the rear of the parlour leads to the first floor and a door with borrowed light over gives access to the kitchen. This has a large cooking hearth in the NW corner with rendered brick jambs and modern mantel beam. A lobby to the SW of the stack contains a very tight winder stair to first floor and attic.



The main parlour chamber has a reeded surround with cast iron grate. The axial beam is boxed in and an exposed jowled storey post is mentioned in the list description. From the landing against the NW wall a



Attic



Winder stair

straight flight of stairs, parallel to those from the ground floor continues up to the attic floor. A heated bedroom to the SW in the rear range also has access to a closet and winder stairs from the kitchen lobby. The doors and door furniture to rooms and cupboards are remarkably complete and in-situ.



Attic rooms have been created within the roof which is of framed joggled side purlin type with paired principals and board collars. Common rafters are mortised into the purlins in both the upper and lower register. In the rear range there are two unusually narrow bays that now coincide with the two flights of stairs. Above the winder stairs in the SW corner a roof raise of lean-to form reuses a section of original purlin. Attic rooms are mainly lit by dormer windows.



The terminal bay of the long rear range is now divided off as a separate unit, 3A Newhaven Lane. Entered from the SW access is gained to a hall with winder stairs to the first floor and a ground floor room. An axial chamfered beam spans the hall and room with two square section joists visible in the entry hall. Walls are covered preventing any comment on the style of the timber-framing.

An axial beam is also visible in the first floor room. The attic room is reached by the continuation of the winder stair and lit by dormer and roof lights. There appears to have been much repair to the roof so that most of the common rafters are no longer framed into the joggled side purlins.

DISCUSSION

As most of the 17th timber-framed structure of the walls and floors of the house are covered the only element that could be analysed was the roof. Although there have

been changes, especially to 3A Newhaven Lane the standard construction of front and rear range is of framed joggled side purlin type with paired principal rafters with board collars. Common rafters are paired at the apex and both upper and lower register framed into the side purlins. Empty mortises are visible in the reused section at the top of the rear winder stair roof raise and the purlins in 3A Newhaven Lane.



As no. 38 West Street was not inspected it was not possible to confirm that this originally formed part of the now remaining front bay and rear range of 39 West Street. The kitchen to no. 39 appears to have always been to the rear of the frontage range but it is now impossible to give a definite use to the front bay in the 17th century or the bay behind the kitchen. The 18th century changes relate to the formation of the hall corridor against the SE flank wall, new brick façade with parapet, pedimented door case, vertical sliding sash window and casement dormer windows. The interior was upgraded to divide chambers with corridors and high quality fixtures and fittings of the period whose survival is remarkably complete.



Rear views.

Elphin & Brenda Watkin. Jan/Feb and May 2020



**39 West Street, Harwich.
& 3A Newhaven Lane**

