

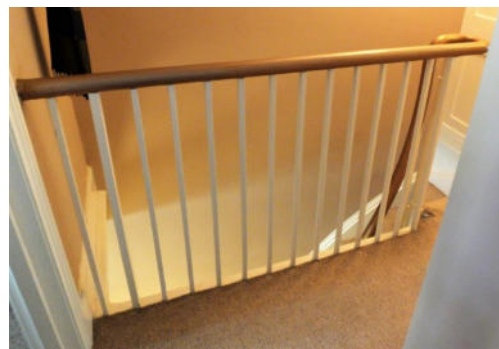
38-39 Church Street

A pair of semi-detached houses built in late Georgian style, circa 1840 and of nearly identical plan form. Front façade of gault brick in Flemish bond with the rear façade and rear wings in red brick. The north flank wall is finished in weather-boarding where the chandlery and sailmakers warehouse was demolished. Vertical sliding sash windows of 6:6 style do not have 'horns'. Brick parapet to front façade with slack pitch slate roof, deep eaves to rear façade supported on paired moulded brackets.

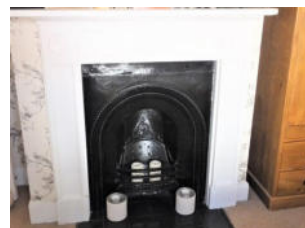


No. 38

The ground floor is of double pile form with a rear scullery wing. The hall is entered through a four panel door with glazed fanlight over and timber door surround. A straight flight of stairs with top winders is positioned against the south flank wall with a cupboard to the rear. The stairs have moulded strings with balustrade of stick balusters. The front parlour has low cupboards either side of the central stack with timber surround containing roundels at the top corners and a cast iron grate. A similar arrangement of low cupboards either side of a central stack exists in the rear living room but with Victorian style cast iron fireplace.



On the first floor the main bedrooms have cast iron grates with timber surrounds that echo the parlour surround. Full height cupboards survive to the south side of the stack in the rear bedroom and also a cupboard on the landing



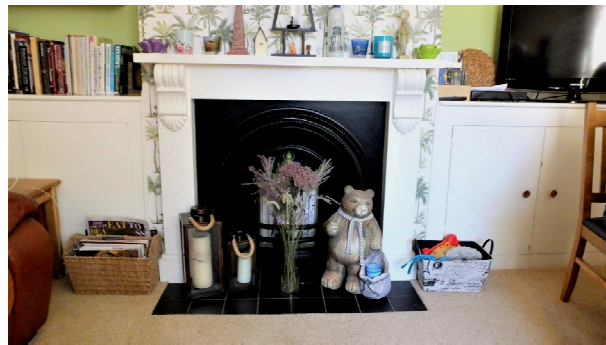
beside the winder stairs.

The roof is of typical machined softwood timbers of the period with a series of trussed rafters around the stacks with supporting purlins for common rafters.



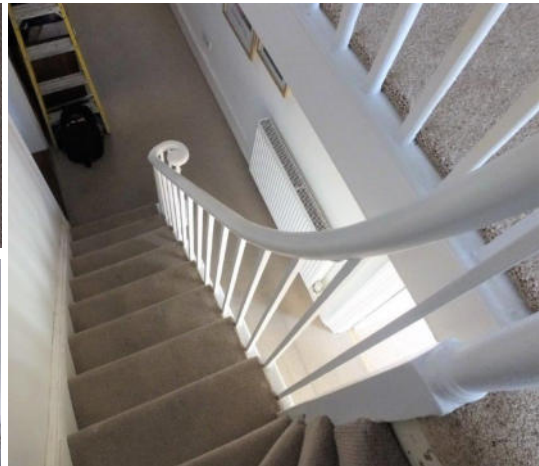
No. 39

The front brick façade extends over the former alleyway between the house and now demolished commercial range. At ground floor the parlour and living room are in double pile plan form with central stack in the dividing wall and flanking low cupboards. The cast iron grates have plain timber surrounds with the mantel piece on fluted console brackets. A lobby with screen of panelled sides

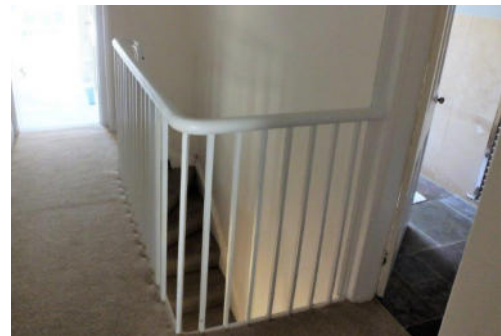


and glazed lights over gives access to the hall.

The stairs are located to the back of the hall with a straight flight against the north wall and winders to the rear wall. These are similar to no. 38 with moulded strings and stick balusters but the wreathed handrail has supporting it



a moulded newel post down to the rounded side of the bottom tread.



At first floor the main bedrooms are heated with

the front room containing a cast iron fire grate and surround. The rounded handrail is supported on a moulded newel post from the winders and then continues along the landing.

Conclusion

This is an interesting development adapted for a specific purpose to combine residential and commerce. There are many good original surviving features with a slight bias to a higher quality of detail in no.39.

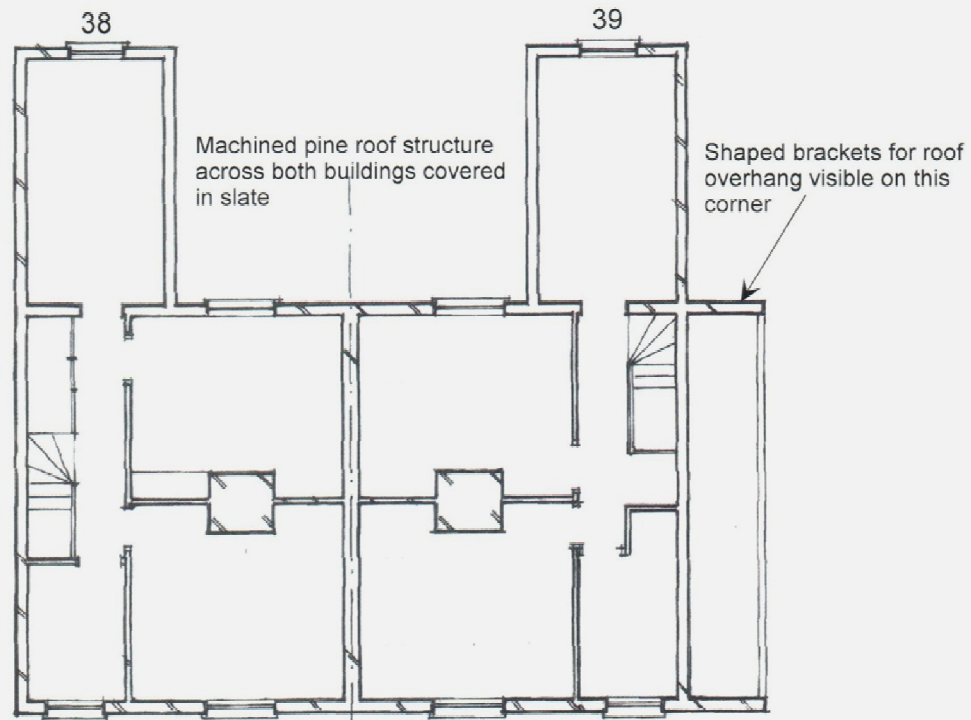


Some details from No.39

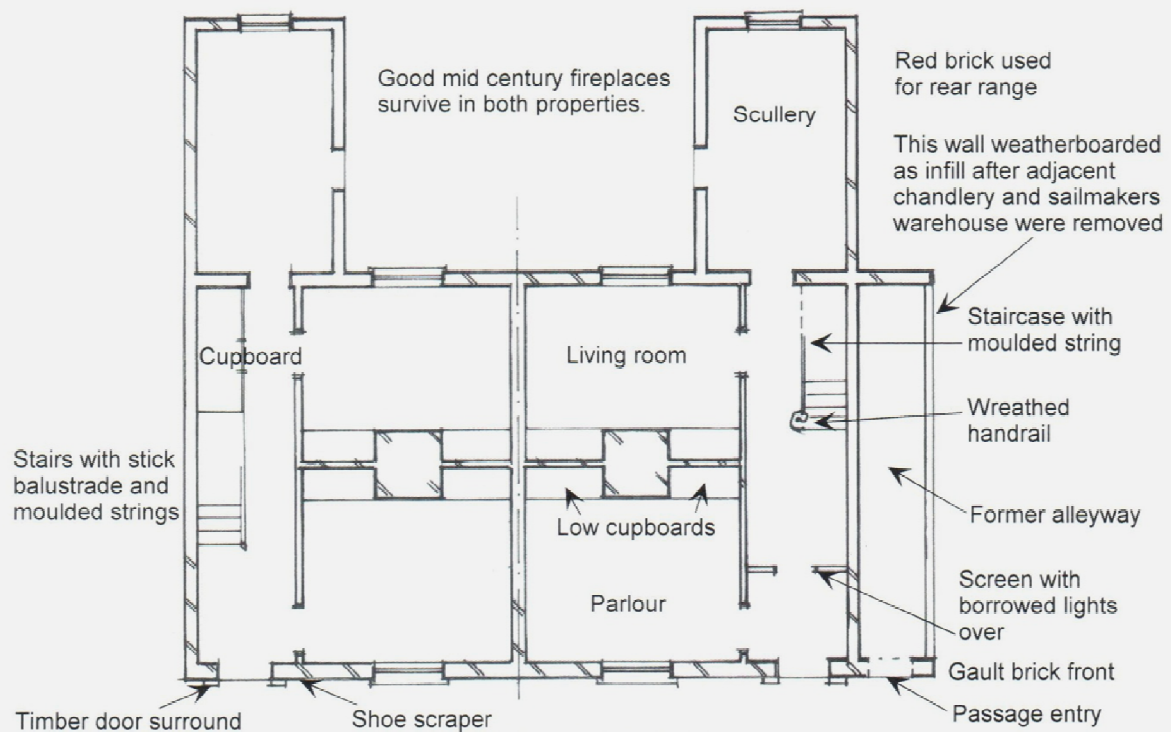


Rear of No.39 showing timber wall and changed roofing detail following removal of chandlery

38/39 Church Street, Harwich



FIRST FLOOR



GROUND FLOOR

Church Street