

37 Church Street

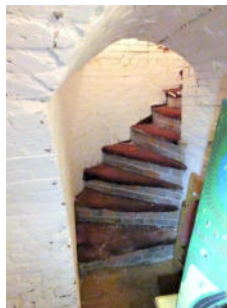
Part of a multi-phase house that incorporates a 16th century timber-framed frontage range aligned NW-SE extended in double pile form to the rear in the 17th century by a timber-framed range with three jettied gabled roofs running at right angles to the street. With mid 18th century remodelling a red brick façade in Flemish bond has been constructed to the street and incorporating No. 36.



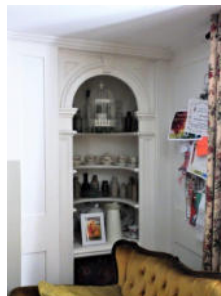
The frontage range at ground floor contains a large section transverse beam with chamfers and run-out stops to the rear. A new section of timber has been scarfed in close to the front wall. The party wall has a section of the axial beam visible above 18th century panelling. An 18th century two panel door on L hinges gives access to a cupboard that connects to the room in the rear range. The SE room is heated by an inserted stack that intrudes into the hall. There are a range of doors along the NW side of the hall. To the rear a boarded door on strap hinges give access to



the cellar via winder brick steps to a barrel vaulted brick cellar with brick floor. A four panel door accesses the winder stairs to the first floor and a small room at the front with a vertical sliding sash window and ventilated over door panel in Chinoiserie style has an 18th century two panel door on L-hinges.



The timber-framed rear range is of high quality with quadrant moulded stepped chamfers, lamb's tongue stops with the typical 17th century notch to the end. A section of 18th century panelling and a corner cupboard survive adjacent to the central stack.



An axial beam is visible in the SE room at first floor level of the frontage range and the NE room has a small fireplace to the inserted stack with early Delft tile surround. The rear room of the 17th century range has a transverse beam with quadrant moulded stepped chamfers and lamb's

tongue stops. A trimmer beam running axially towards the stack is also chamfered and stopped in identical fashion. To the west of the stack is a section of 17th century panelling with panelled door on cock's head hinges that gives access to a cupboard or former closet. The cupboard to the east of the stack has an 18th century boarded door on L hinges.

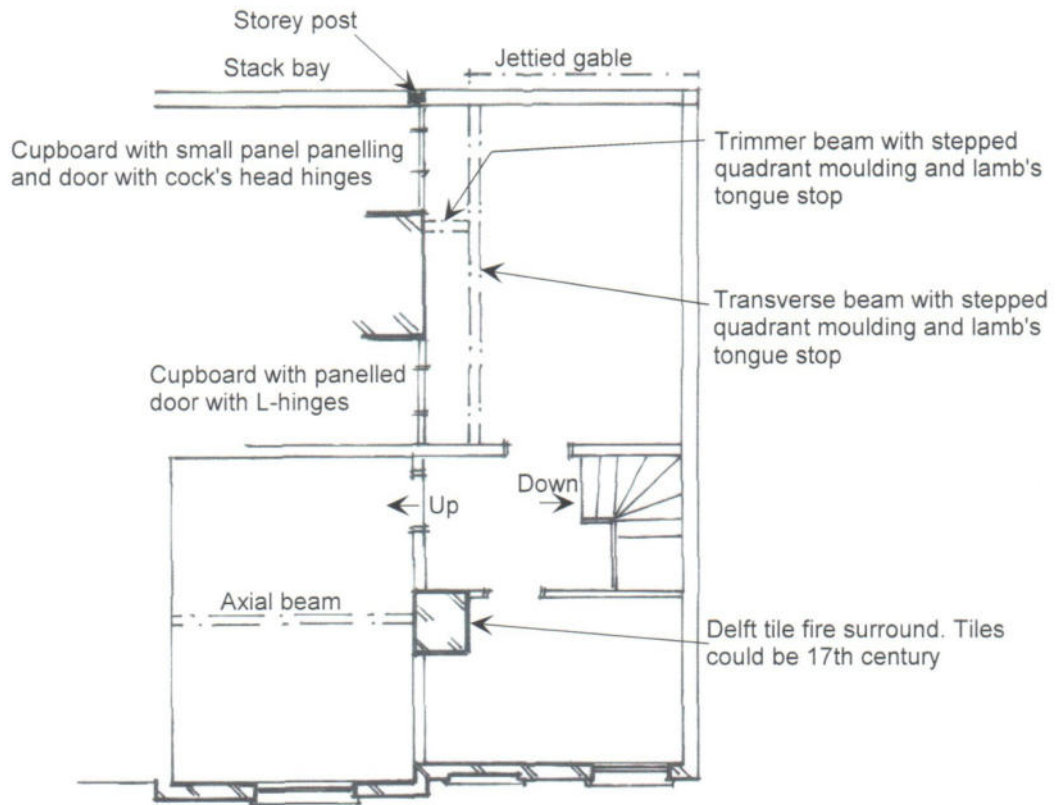


Conclusion

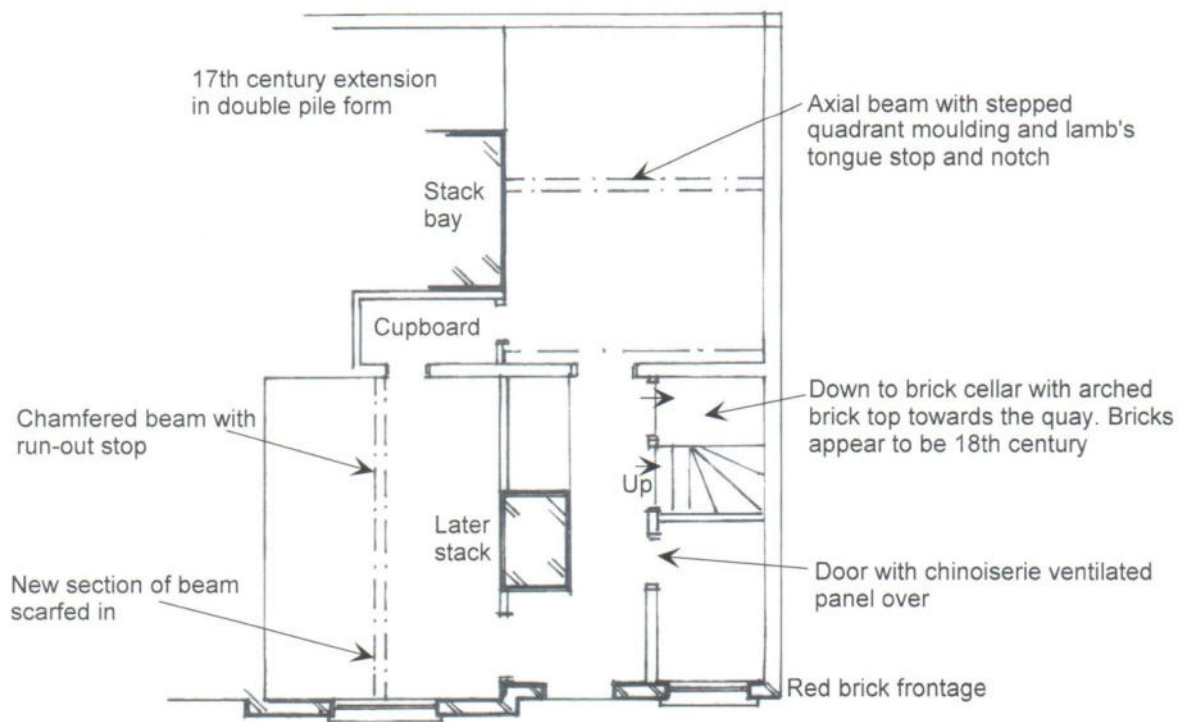
The limited remnants visible of the frontage range do not provide any evidence of former use. The rear range however appears to be an extension of domestic form that would have provided four heated rooms, two to the ground floor and two to the first floor with possible stair access to the S of the stack. If the frontage range was commercial this would have given high class domestic premises to the rear with the jettied gables being a prominent feature from the west. Unfortunately the ultimate phase of division into two properties has destroyed any visible evidence.



37 Church Street, Harwich



FIRST FLOOR



GROUND FLOOR

Church Street