

## 20 KING'S QUAY STREET, HARWICH

List entry no. 1298490

Grid Reference. TM 26089 32670

This is a timber-framed building of two storey form with attics and of two main phases. The frontage range, phase I is aligned NW-SE with gabled roof parallel to the street. It is of nearly square plan form with the front jetty now underbuilt. The phase II addition to the rear creates an oblong plan with gable roof at right angles to the frontage range.



### PHASE I

Most of the timber-frame is covered apart from a section in primary braced style visible in the rear SW wall. The plan is of two unequal bays with the narrow bay relating to the stack/stair bay to the N. The axial and transverse beams are in softwood with quadrant mouldings and lamb's tongue stops with some having a



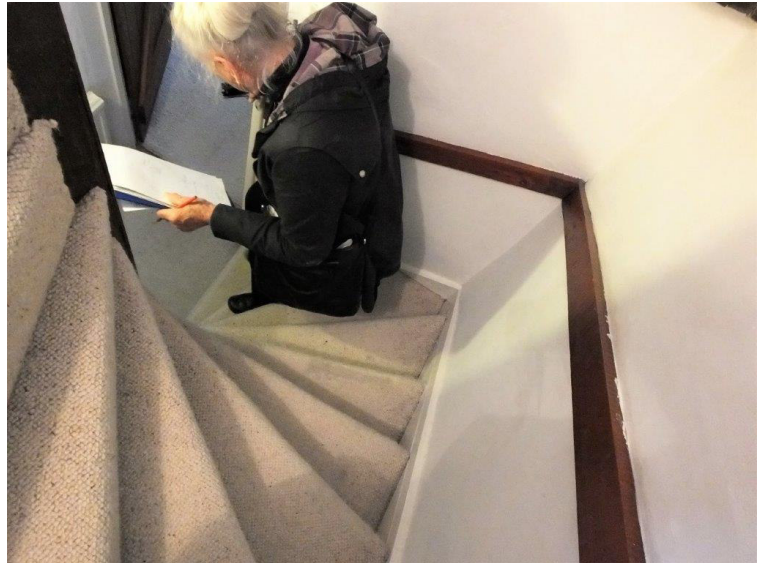
typical 17<sup>th</sup> century end notch. Common joists, also in softwood are of square section and housed with soffit tenons. Many appear to be reused and not matching pre-cut tenons in main beams.

The listing also notes that the front was originally jettied with each joist pegged to the inner bressumer.



The cooking hearth in the brick stack has a cambered mantel beam with quadrant moulding, lamb's tongue stops with typical 17<sup>th</sup> century end notches.

The tight winder stairs are located to the rear of the brick stack and nearby a later opening in the rear timber-frame gives access to the 19<sup>th</sup> century extension.



The entrance to the first floor chamber from the winder stair has a later elegant shallow arched head board in pine with side soffit mouldings. The softwood axial and transverse beams have quadrant mouldings with lamb's tongue stops. The plain square section common joists are housed with a mix of barefaced soffit tenon and soffit tenon with top spur.



The attic is lit by a dormer window in the front roof slope.

The roof construction is of a three bay framed joggled side purlin with paired principal rafters with board collars. Chiselled carpenter's marks were noted on the principal rafters.



## PHASE II

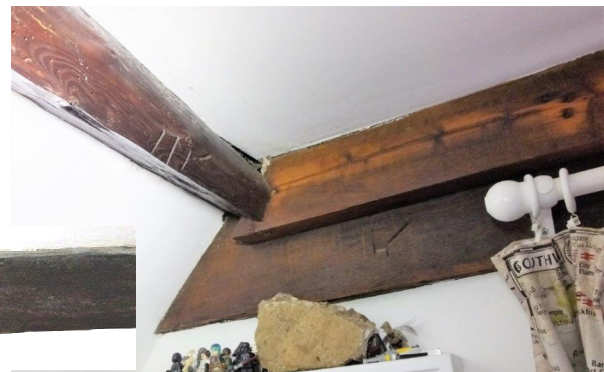
This is of two storey form with attic and cellar and one bay plan rear extension. Covered timber-framed construction with ground floor pine axial beam, chamfered with lamb's tongue stops. Common joists are plain and of vertical section. A brick stack is positioned centrally on the NW wall with parlour type hearth. The cellar was not seen.



At first floor the rear room is accessed by the staircase in the original build. There is evidence that the ceiling was originally plastered perhaps to cover the beetle attack now clearly visible. This appears to have been in the timber before conversion and is not uncommon in the imported softwood. The pine axial beam is chamfered with lamb's tongue stops and the common joists of vertical section.



The rear attic is lit by a gable window and the roof of side purlin style. The purlins are simply converted round trees. The end board collar has a chiselled III carpenter's mark.

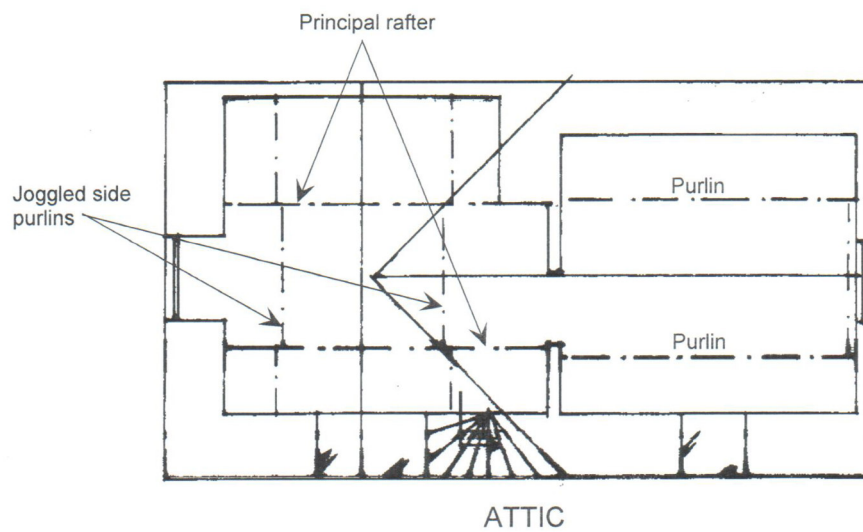
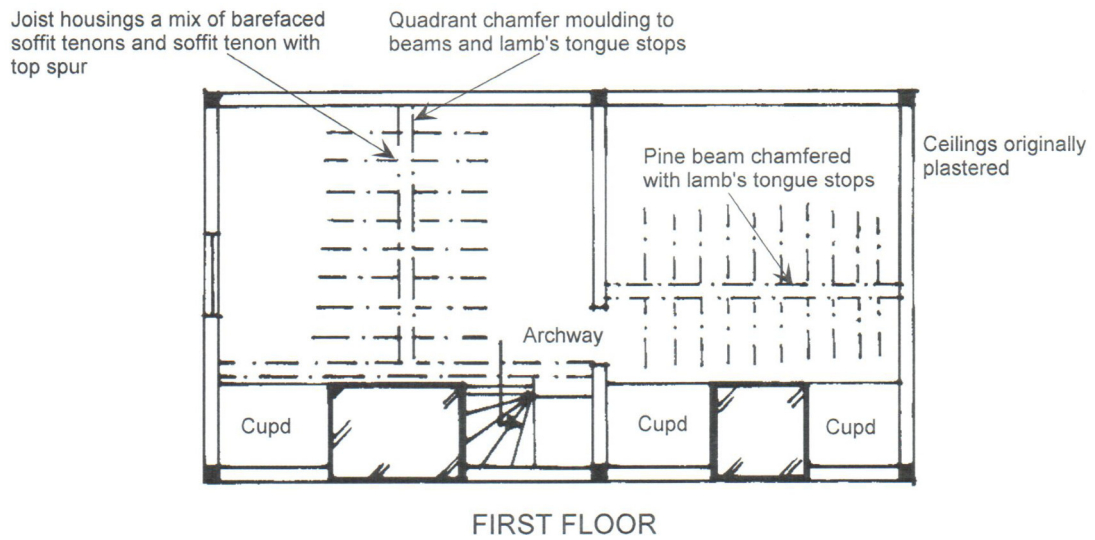
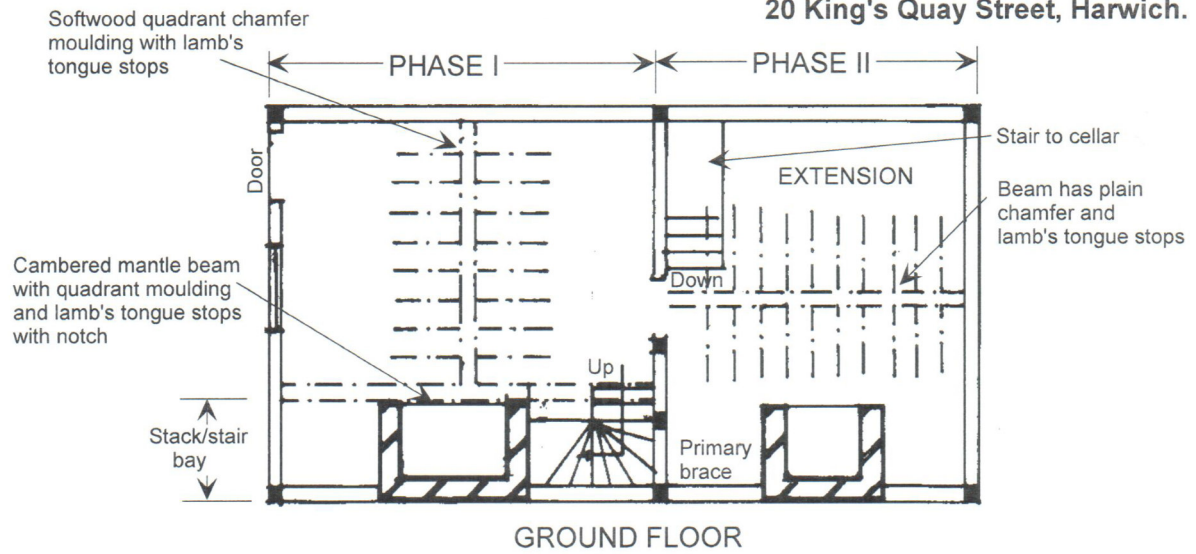


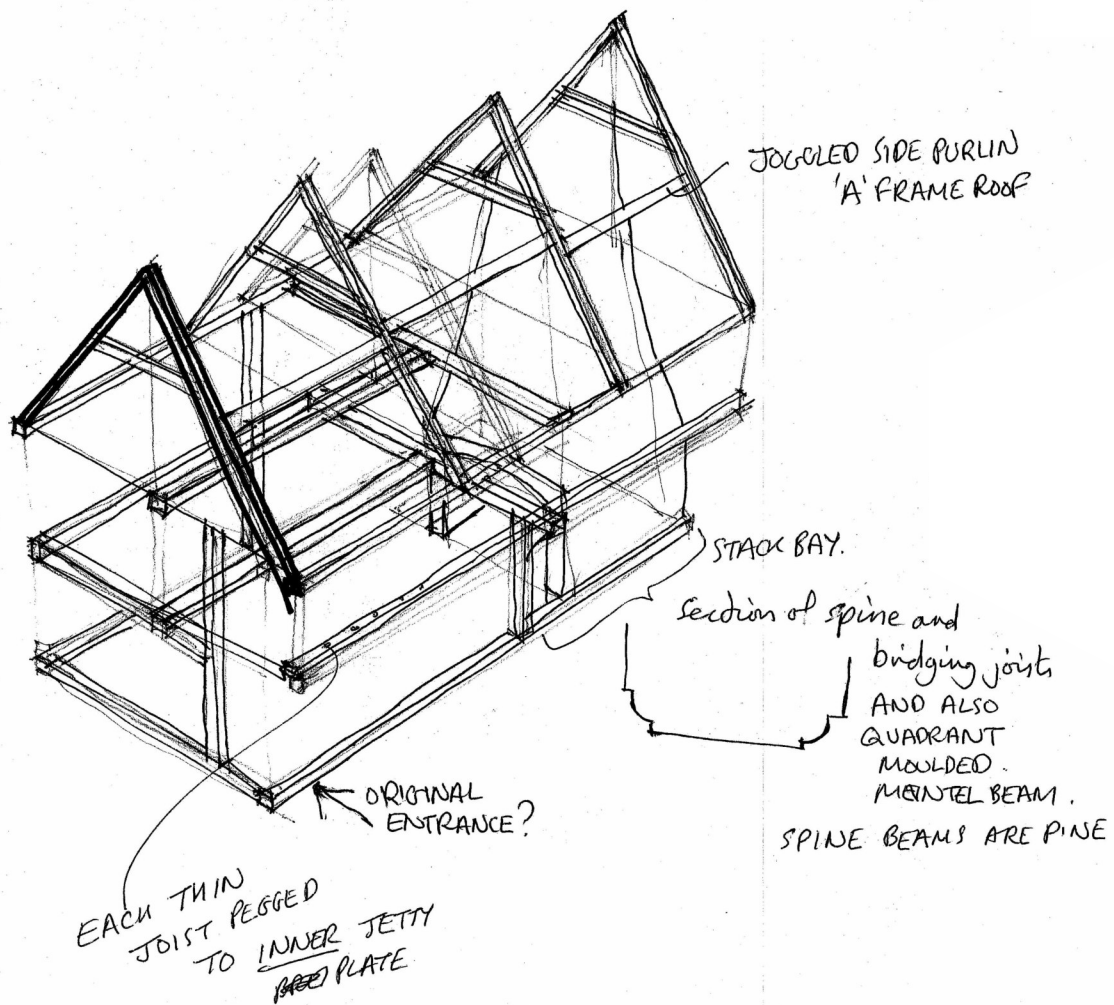
## DISCUSSION

The 17<sup>th</sup> century original build represents a rare well preserved example of a modest dwelling comprising of main living/cooking area, chamber and attic. Built at a time when the development of Harwich was expanding. The later 19<sup>th</sup> century extension more than doubles the available accommodation providing a ground floor parlour over a cellar, bedroom and attic again at a time when the development of Harwich was expanding. With the proximity to the dock yard could the original dwelling been built for or by a craftsman who was working there?

The listing description refers to the RCHME monument no. 30 as back of no. 23 King's Quay Street and now being no. 20 King's Quay Street. However the RCHME plan shows a building of two equal bays and double gabled form. Internally a chamfered beam is mentioned and some exposed timber framing in the passage. No. 20 King's Quay Street is of two unequal bays with the smaller being the stair/stack bay but no mention is made in the RCHME description of a stack. The main beams at 20 King's Quay Street have quadrant mouldings rather than chamfers. It is suggested that the RCHME description refers to a rear range of another building rather than 20 King's Quay Street.

20 King's Quay Street, Harwich.





Sketch made by David Stenning. Date unknown but maybe 1980-90.

He suggested a date c1630